

Toward interpretable polyphonic SED with attention maps based on local prototypes



Music
Technology
Group

DCASE 2021
Workshop



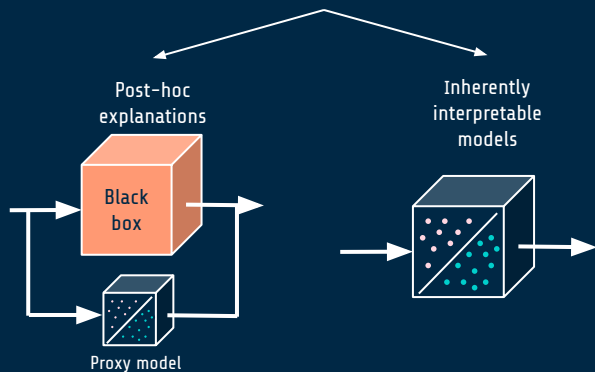
UNIVERSIDAD
DE LA REPUBLICA
URUGUAY

Pablo Zinemanas, Martín Rocamora, Eduardo Fonseca, Frederic Font, and Xavier Serra

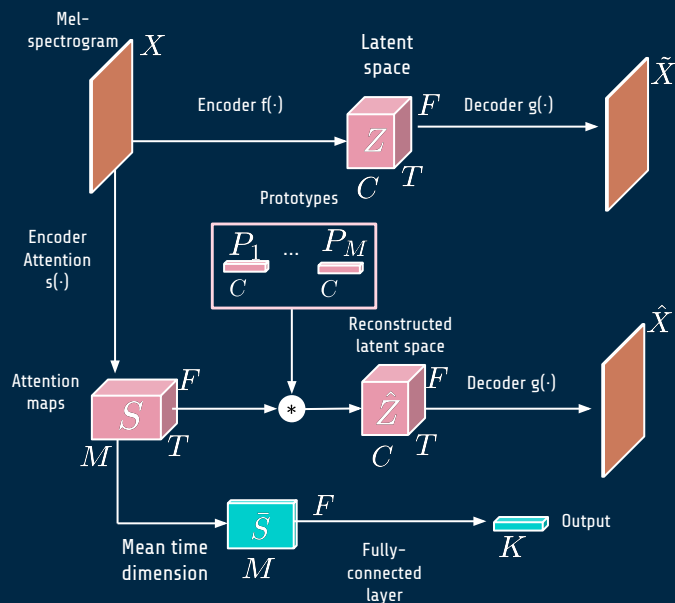
Problems of black-box models



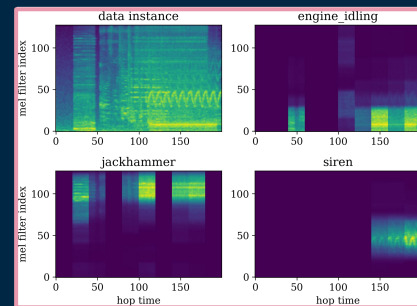
Interpretable machine learning



Proposed interpretable model



Explanations in form of attention maps



Results comparable to black-box baselines

